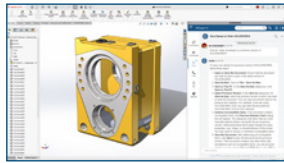


# WHAT'S NEW IN SOLIDWORKS® 2026— COLLABORATION AND DATA MANAGEMENT

These enhancements apply to SOLIDWORKS Design solutions unless stated otherwise.

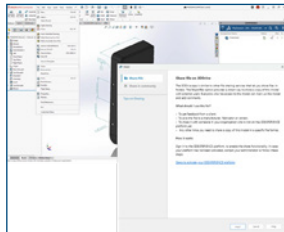


## 1 AURA integration Into 3DSwym

- Quickly summarize community posts, wikis, questions, and ideas to capture key takeaways at a glance.
- Start smarter conversations by pulling context from any post, wiki, idea, or even an entire community for more relevant, targeted answers from AURA.

### Benefits

Accelerate your SOLIDWORKS workflow with instant answers, quick summaries, and smarter conversations.

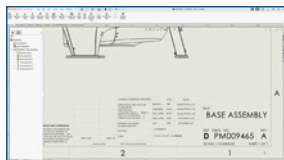


## 2 Collaboration From Within SOLIDWORKS

- Effortlessly collaborate with industry peers by accessing the SOLIDWORKS User Forum directly from within SOLIDWORKS.
- Streamline collaboration by seamlessly sharing information using 3DDrive and 3DSwym directly from SOLIDWORKS, without worrying about cloud storage or data conversion issues.

### Benefits

Effortlessly collaborate and share data with industry peers directly from within SOLIDWORKS.

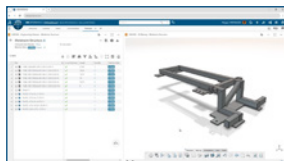


## 3 Drawing Stamping With Maturity Status Information

- Reflect real-time PLM property updates in drawings for accurate change management.
- Stamp drawings with user names and email addresses to enhance traceability and streamline stakeholder contact.

### Benefits

Ensure accurate and seamless change management while improving traceability and communication.

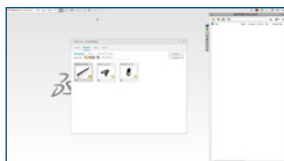


## 4 Support for Cut Lists on the 3DEXPERIENCE Platform

- Enhance design-to-manufacturing workflow efficiency with seamless cut list management, visualization, and EBOM/MBOM integration.

### Benefits

Manage cut lists and integrate EBOM/MBOM to align design and production effortlessly.

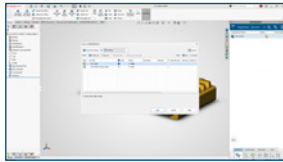


## 5 Access to Recent Files From Active Tenant

- Streamline workflows and prevent duplications for users who work on multiple tenants by displaying only files relevant to the active tenant.

### Benefits

Reduce clutter and prevent duplicates by showing only relevant recent files per active tenant.

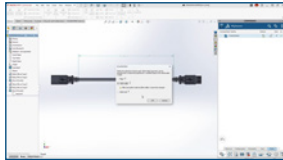


## 6 Excel File Management for Design Tables

- Improve design automation and maintain data integrity by managing Excel files used in SOLIDWORKS Design Tables directly on the 3DEXPERIENCE platform.

### Benefits

Reduce version errors and ensure consistency by managing Excel design tables on the 3DEXPERIENCE platform.

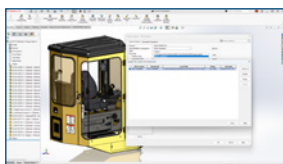


## 7 Support for Deformable Components

- Streamline the management of rigid and deformed part states, enhancing design accuracy and efficiency for complex assemblies.

### Benefits

Boost design accuracy and efficiency in complex assemblies by easily managing rigid and deformed parts.



## 8 Automatic Bookmark Content Updates

- Eliminate the need for manual updates and ensure you always have the latest version with real-time automatic Bookmark file location updates.

### Benefits

Ensure up-to-date access to bookmarked content with automatic checks and updates each session.

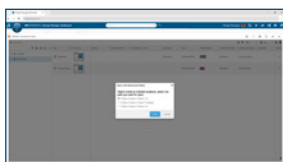


## 9 Enterprise Document Maturity Routing and Approval

- Enforce enterprise-level approval workflows by automatically triggering predefined route templates during document maturity state changes.
- Ensure that all required approvals are consistently initiated, tracked, and auditable.

### Benefits

Automate approval workflows to enhance control, improve efficiency, and ensure consistent governance.



## 10 Bookmark Editor Enhancements

- Quickly navigate from any object to its associated bookmarks with the streamlined Open With feature, supporting multiple applications.
- Select the relevant bookmark when multiple bookmarks exist, ensuring clarity and easier access.

### Benefits

Simplify navigation and improve clarity with faster, more accurate access to relevant bookmarks.

**Dassault Systèmes is a catalyst for human progress. Since 1981, the company has pioneered virtual worlds to improve real life for consumers, patients and citizens.**

With Dassault Systèmes' 3DEXPERIENCE platform, 370,000 customers of all sizes, in all industries, can collaborate, imagine and create sustainable innovations that drive meaningful impact.

For more information, visit: [www.3ds.com](http://www.3ds.com)

**Virtual Worlds  
for Real Life**

