

Ultra precision, Repeatability, Reliability

MSLA & SLA printers meet your
present and future needs

P13 Pro



Helios-P600



P13 Pro

Professional desktop 3D printer tailored for the shoe mold industry.



Smarter and Easier

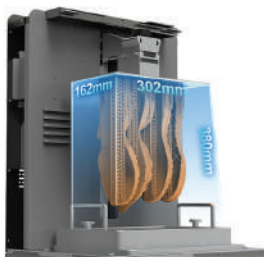
P13 Pro's print parameters can be set directly on the device, and it has open system with custom modules. Also, there is a built-in storage space to realize off-line printing.



Auto-Sensing Light

With the auto-sensing design, P13 Pro's print room can still be seen clearly in dimly lit environments.

* The light has been tested to have no curing effect on the resin.



Large Printing Volume

302.4*161.98*380mm large printing size allows to print 3 general size shoe molds at the same time, the maximum shoe mold size it can print is 380mm.



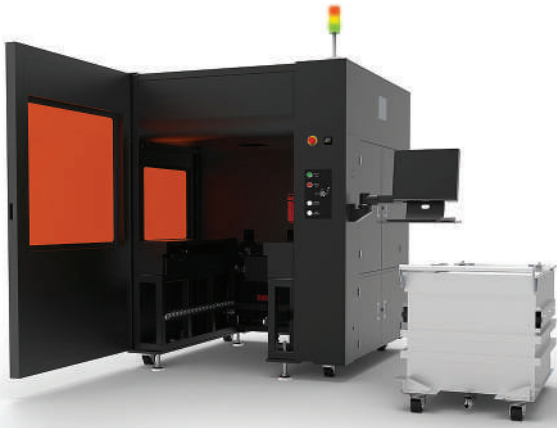
High Quality Printing

Keep high quality printing result when printing large parts. P13 Pro prints parts with high accuracy and there nearly no printing lines on the surface.



High Printing Success Rate

With the 2 heating outlets, the heating system of P13 Pro enables more uniform heat in the printing chamber, which ensures the high printing success rate even in a low temperature environment.

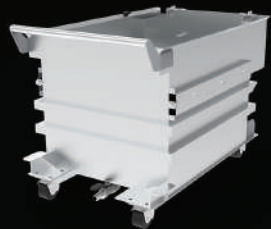
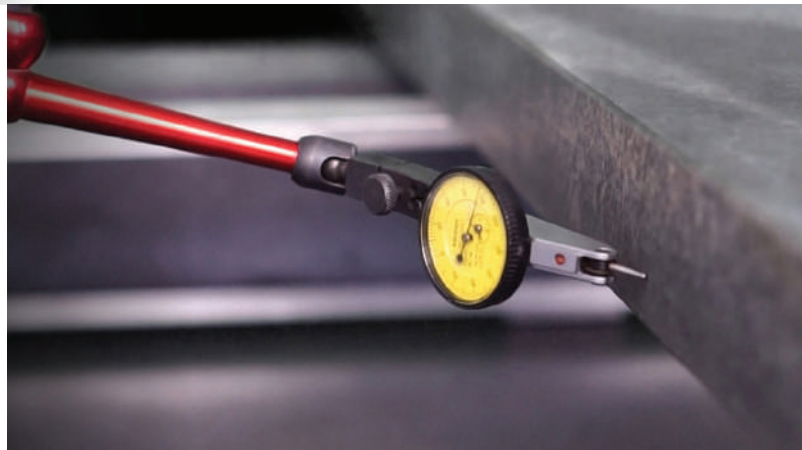


Helios-P600

The first industrial SLA 3D printer with a removable resin vat.

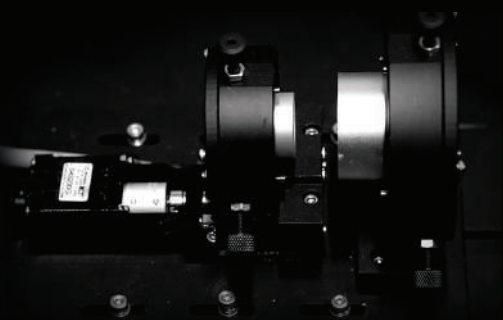
Pinpoint Precision

P13 Pro's print parameters can be set directly on the device, and it has an open system with custom modules. Also, there is a built-in storage space to realize off-line printing.



Removable Resin Vat

Remove or install the resin vat as the software instruction in a short time. One printer can be equipped with several resin vats, saving more cost and space.



Rapid Printing Speed

Faster speed 30%-50% than traditional SLA printing technology. Variable laser beam enables to change the beam size during the printing process, 0.5-0.6mm large beam and scanning the support and border with 0.15-0.2mm small beam.



Excellent Compatibility

Open-Source Design
Allow 355nm resin from all brands without wasting.

P13 Pro



Printing Properties

| | |
|---|---|
| Printer | P13 Pro |
| Technology | Mask Stereolithography |
| Light-source | Industrial UV LED (16K) |
| Build Volume (W x D x H) | 302.4 × 161.98 × 380 mm 11.9 × 6.38 × 14.96 in |
| Layer Thickness (material dependent) | 25-150 um 0.001-0.006 in |
| LCD Resolution | 15120 × 6230 (16K) |
| Pixel Size with Imadjust [®] | 10 × 13um |
| Laser Spot Size | 20 × 26um |
| Printing speed (material dependent) | MAX 60mm/h |
| Material | 405nm UV Resin |

Hardware

| | |
|------------------------------------|---|
| Printer | P13 Pro |
| Printer Dimensions (W × D × H) | 500 × 420 × 769mm 19.7 × 16.5 × 30.3 in |
| Net Weight | 58 kg 127.9 lbs |
| Internal Temperature | Auto-heats to 35 °C Auto-heats to 95 °F |
| Temperature Control | Air-heated print chamber |
| Air Purifier | Built-in Active Carbon |
| Operating Environment [®] | 18 - 28 °C 64 - 82 °F |
| Power Requirements | 220-240 VAC 1.6 A 50/60 Hz 350 W |
| Light-source Specifications | 91 units LED light matrix 405nm wavelength |
| Connectivity | USB 2.0 |
| Printer Control | 5.0 inch Touch Screen |

Operating Environment: It will be slightly different due to different environment temperature.

Helios-P600



Printing Properties

| | |
|----------------------------------|---|
| 3D Printer | Helios-P 600 |
| 3D Printer Size Crated (WxDxH) | 1800 × 1700 × 2200 mm 70.9 × 66.9 × 86.6 in |
| 3D Printer Size Uncrated (WxDxH) | Without monitor and LED light: 1490 × 1580 × 1970 mm 58.7 × 62.2 × 77.6 in With monitor and LED light: 2160 × 1690 × 2300 mm 85.0 × 66.5 × 90.6 in |
| 3D Printer Weight Crated | ~1550 kg 3417 lbs |
| 3D Printer Weight Uncrated | 1428 kg 3148 lbs |
| Electrical Requirements | 220-240 VAC 50/60 Hz Single Phase 2.5 kW |
| Operating Temperature Range | 22-26 °C 71.6-78.8 °F |
| Humidity Range | 35-45 %RH Non-condensing |
| Laser | Solid-state frequency tripled Nd:YVO4 |
| Recoater Rim | Marble |
| Accessories | UPS Drain Device PCA600 Post Curing Apparatus |

Printing Specifications

| | |
|---|---|
| 3D Printer | Helios-P 600 |
| Max Build Volume (xyz) | Flexible build volume options with customized resin vat. |
| Full | 600 × 600 × 500 mm 23.6 × 23.6 × 19.7 in 297 L 78.5 U.S. gal |
| Custom | The height of the resin vat is customized (less than full height). |
| Resin Vat Capacity | ~350 kg 772 lbs |
| Accuracy | L ≤ 100 mm: ± 0.1 mm L ≤ 3.94 in: ± 0.004 in L > 100 mm: ± 0.1% × L L > 3.94 in: ± 0.1% × L *Accuracy may vary depending on parameters, part geometry and size, pre-processing or post-processing methods, materials and environment. |
| Slicing Thickness | 0.05-0.15 mm 0.002-0.006 in |
| Intelligent Scanning Strategy | Viable Laser Beam |
| XY Resolution | 0.025 mm 0.001 in *XY resolution describes image grayscale adjust. |
| Fine Feature/Outer Surface Scanning | 0.15-0.2 mm 0.006-0.008 in |
| Large Feature/Internal Surface Scanning | 0.5-0.6 mm 0.020-0.024 in |

Materials

| | |
|--------------------|--|
| Build Materials | Please refer to the TDS and MSDS for more information for the printing material. |
| Material Packaging | 10 kg per barrel |

Software and Network

| | |
|-----------------------------------|-------------------------|
| 3D Printer Software | Magforms iBuild 2.0 |
| Printer Operating System | Windows [®] 10 |
| Input Data File Formats Supported | SLC, CLI |

